

Prevertebral Region

Presented by :- Dr. Sushma Tomar
Associate Professor
Department of Anatomy

INTRODUCTION

PREVERTEBRAL REGION OF THE NECK-

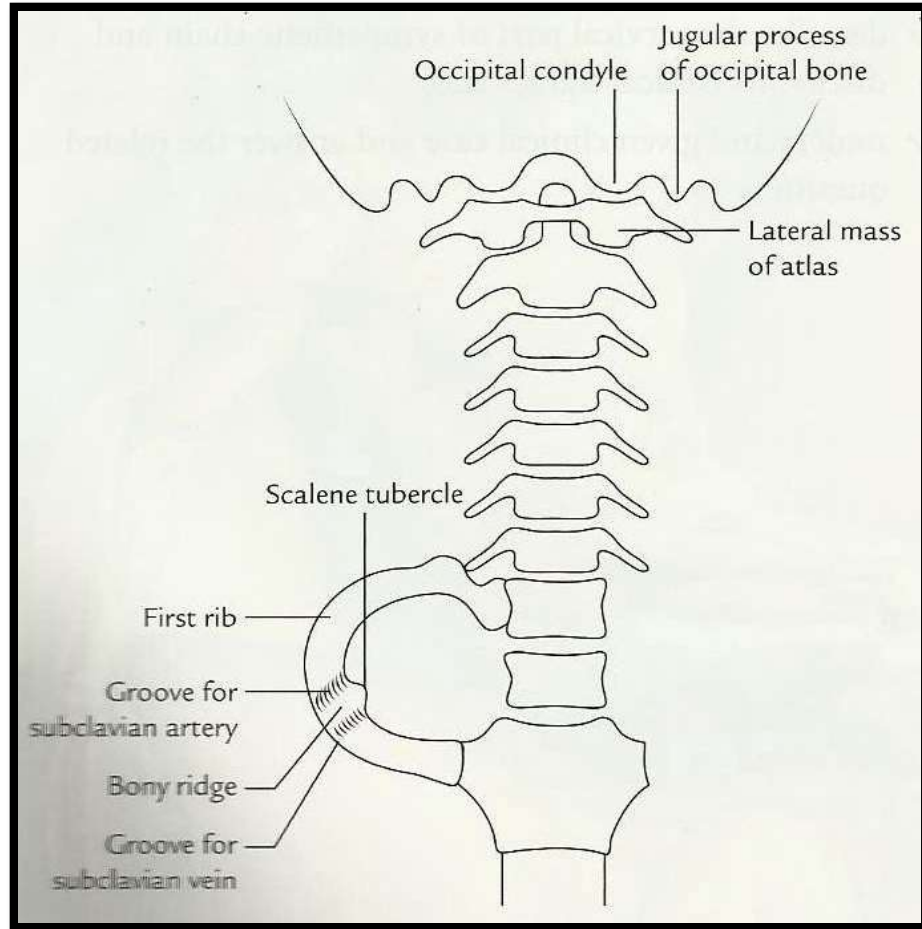
- Extends from 1st cervical vertebra to the upper two thoracic vertebrae.

PARAVERTEBRAL REGION OF THE NECK-

- Lies on either side of prevertebral region.
- Extends from transverse process of 1st cervical vertebra to the 1st rib.

ROOT OF THE NECK-

- Area of the neck immediately above the thoracic inlet.



Structures in the Pre-and Paravertebral Regions

- Prevertebral (Anterior vertebral)muscles.
- Paravertebral (Lateral vertebral)muscles.
- Cervical plexus.
- Cervical sympathetic chains.
- Large vessels.

PREVERTEBRAL (Anterior Vertebral)MUSCLES

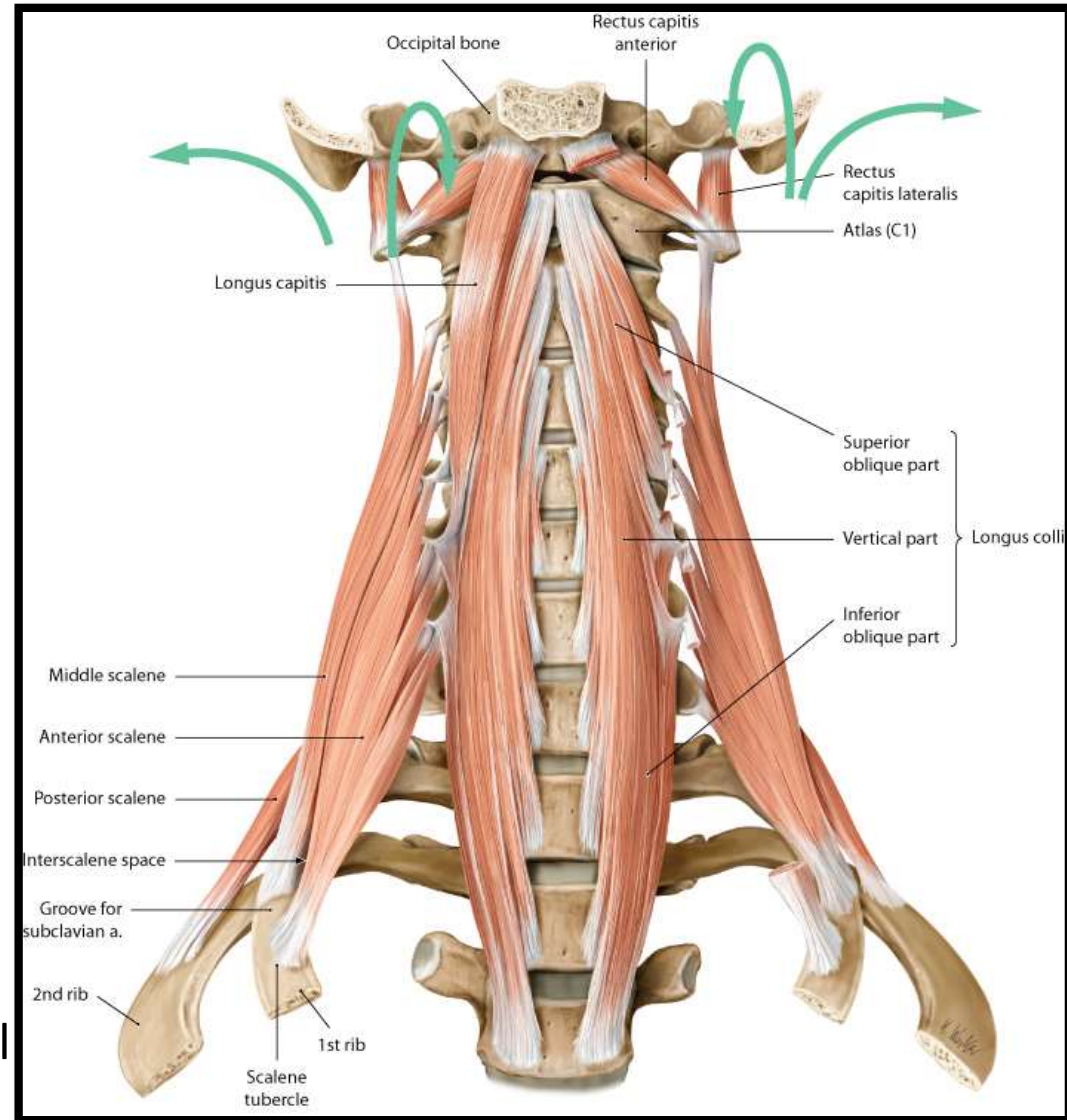
1. *Rectus capitis anterior.*

2. *Rectus capitis lateralis.*

3. *Longus cervicis (longus colli).*

4. *Longus capitis.*

- Lie in front of the cervical part of the vertebral column.
- Covered by **prevertebral fascia**.
- Form the posterior boundary of **retropharyngeal space**.
- Supplied by ventral rami of cervical spinal nerves.



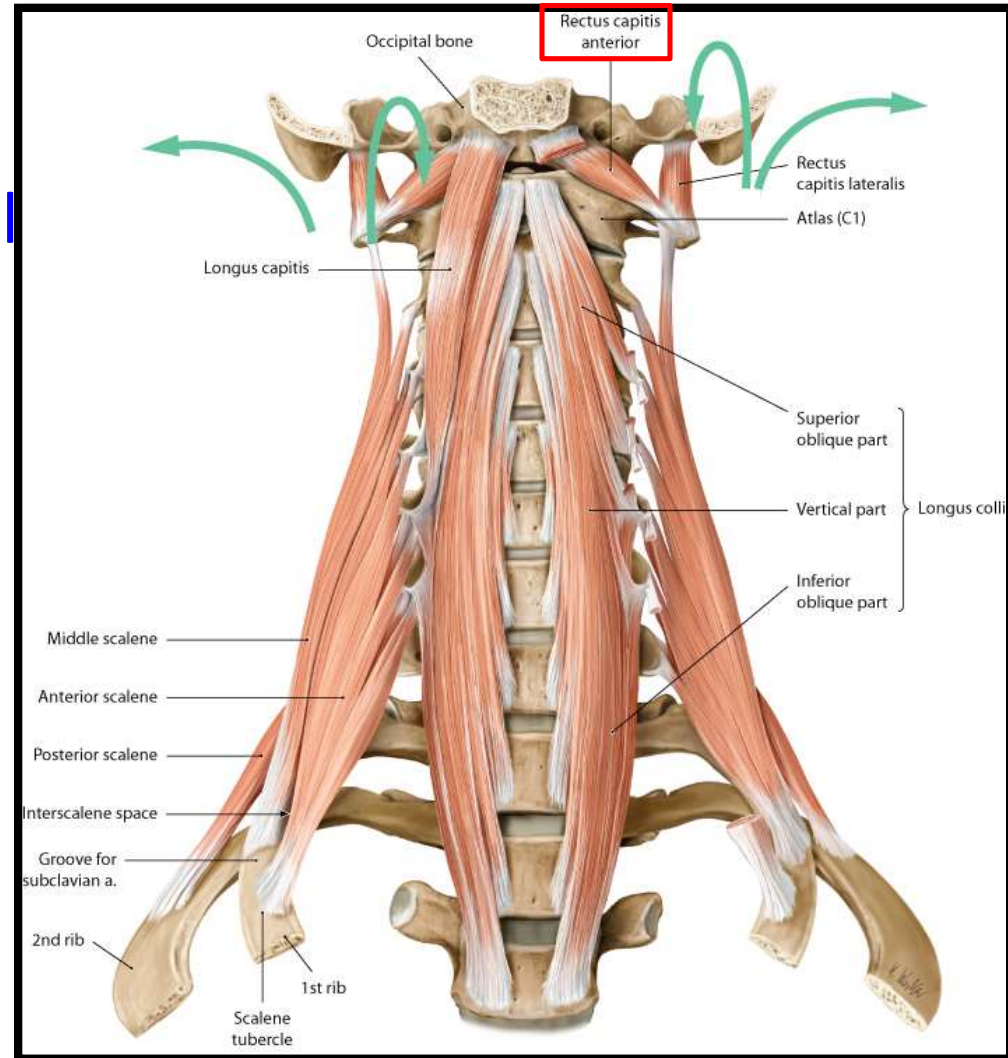
Rectus Capitis Anterior

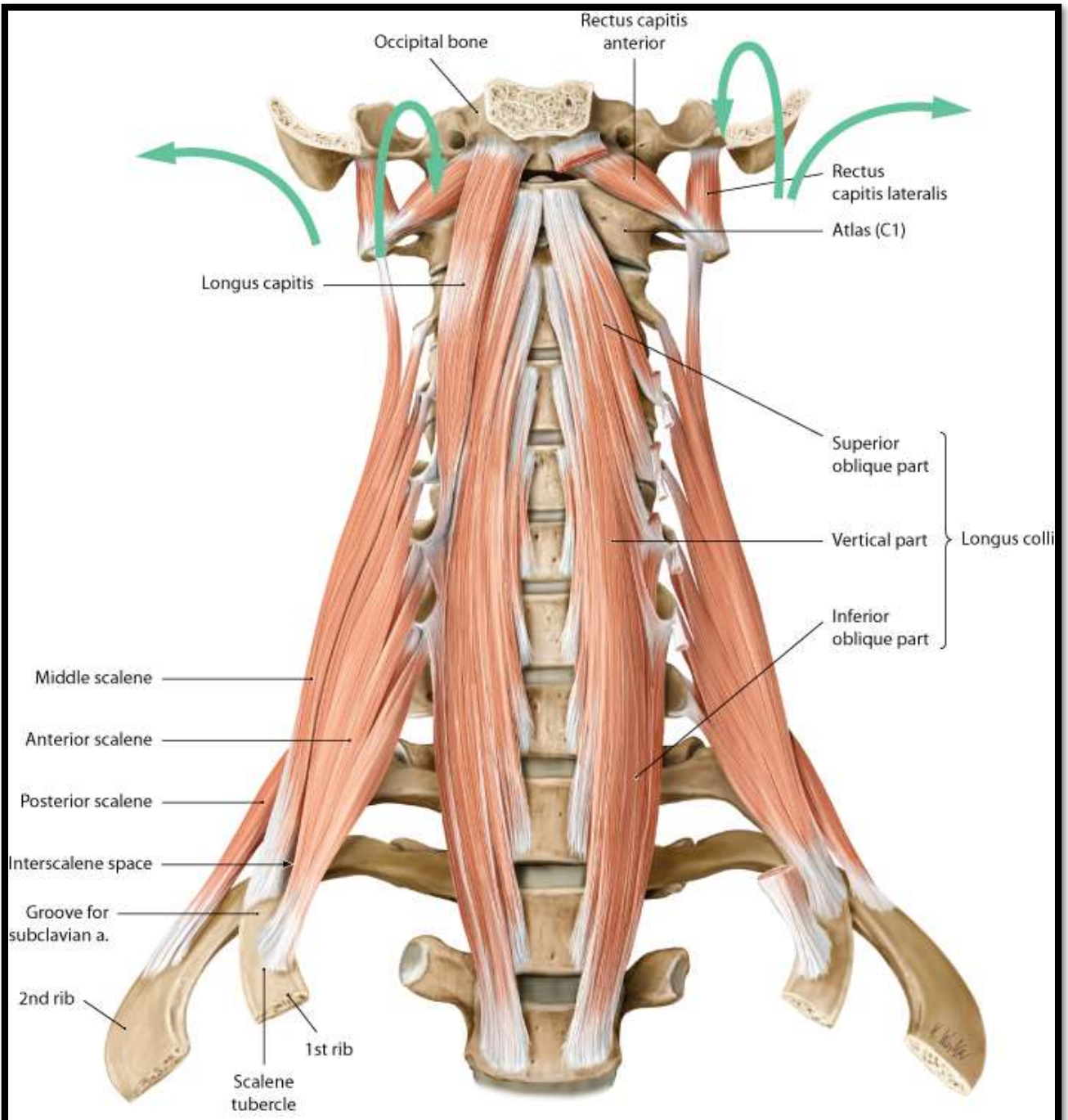
ORIGIN-

- Anterior surface of **lateral mass** of atlas.

INSERTION-

- Inferior surface of the basi-occiput just in front of the occipital condyle.





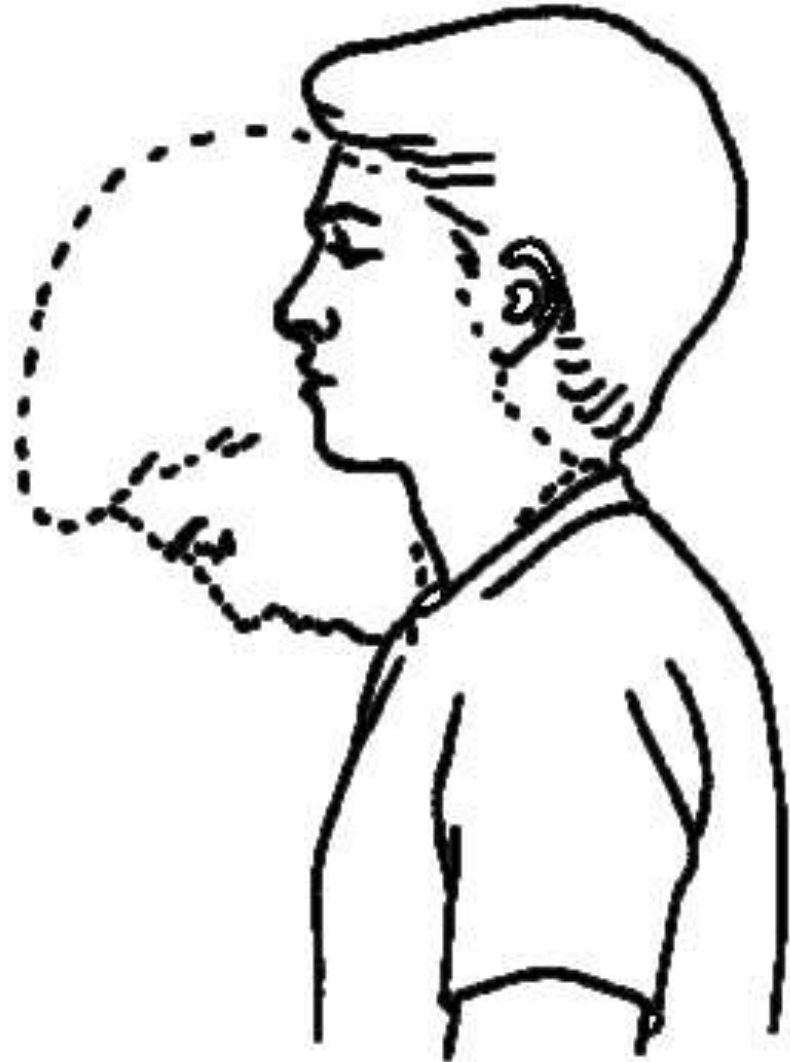
Rectus Capitis Anterior contd...

NERVE SUPPLY-

- Ventral ramus of 1st cervical spinal nerve.

ACTIONS-

- Flexion of head.



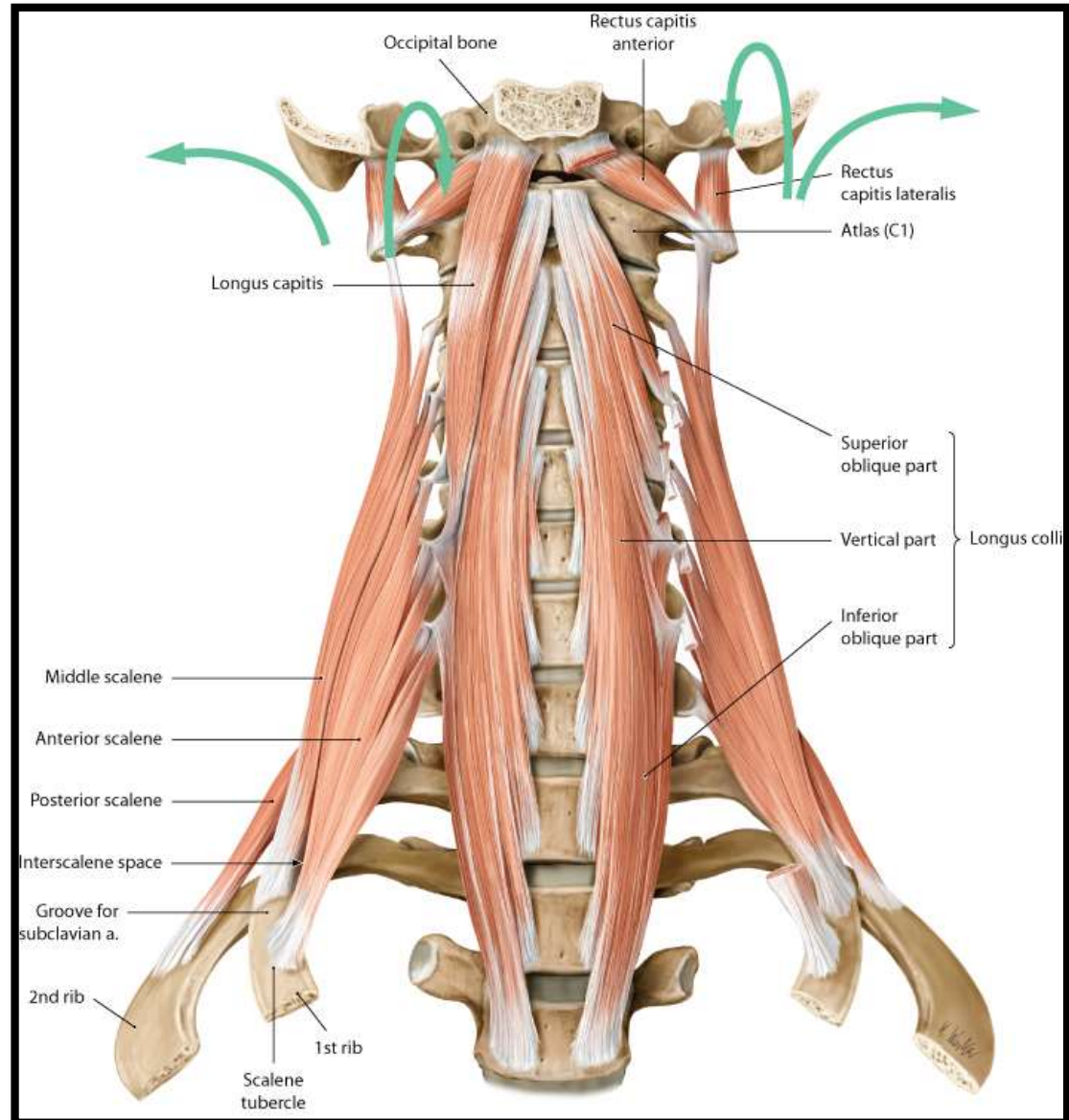
Rectus Capitis Lateralis

ORIGIN-

- Upper surface of the **transverse process** of the atlas.

INSERTION-

- Inferior surface of the **jugular process** of the occipital bone.



Rectus Capitis Lateralis contd...

NERVE SUPPLY-

- Ventral ramus of **1st** cervical spinal nerve.

ACTION-

- Lateral flexion of head to the same side.



Lateral flexion

Longus Cervicis (Longus Colli)

- Extends from **anterior tubercle of atlas** to the anterior aspect of body of **3rd thoracic vertebra**.
- Consists of 3 parts:-
 - *Upper oblique.*
 - *Middle vertical.*
 - *Lower oblique.*

UPPER OBLIQUE PART-

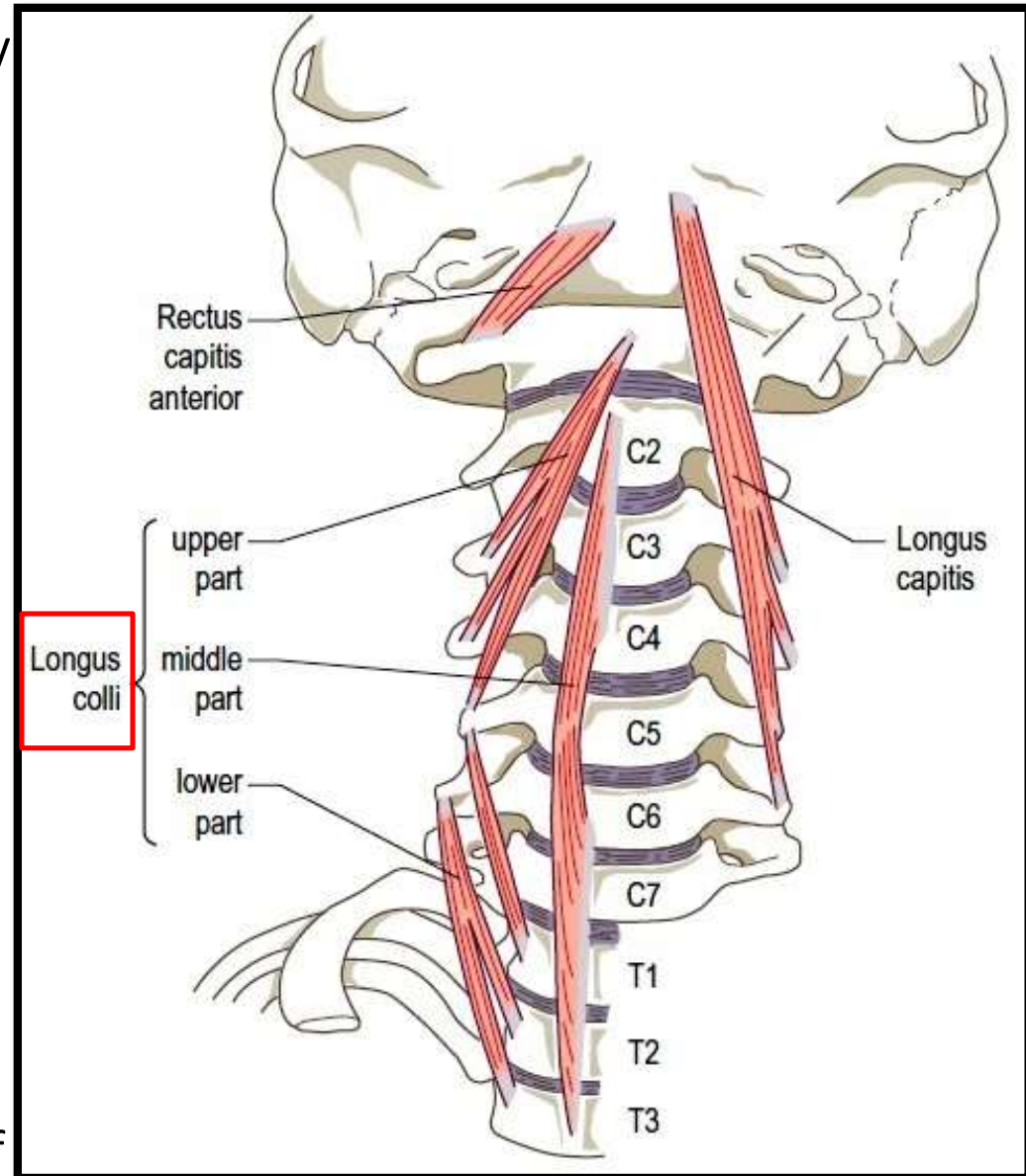
- Passes upward and medially.

Origin-

- Anterior tubercles of transverse processes of **C3, C4, and C5** vertebrae.

Insertion-

- **Anterior arch of atlas** to the side of anterior tubercle.



Longus Cervicis (Longus Colli) contd...

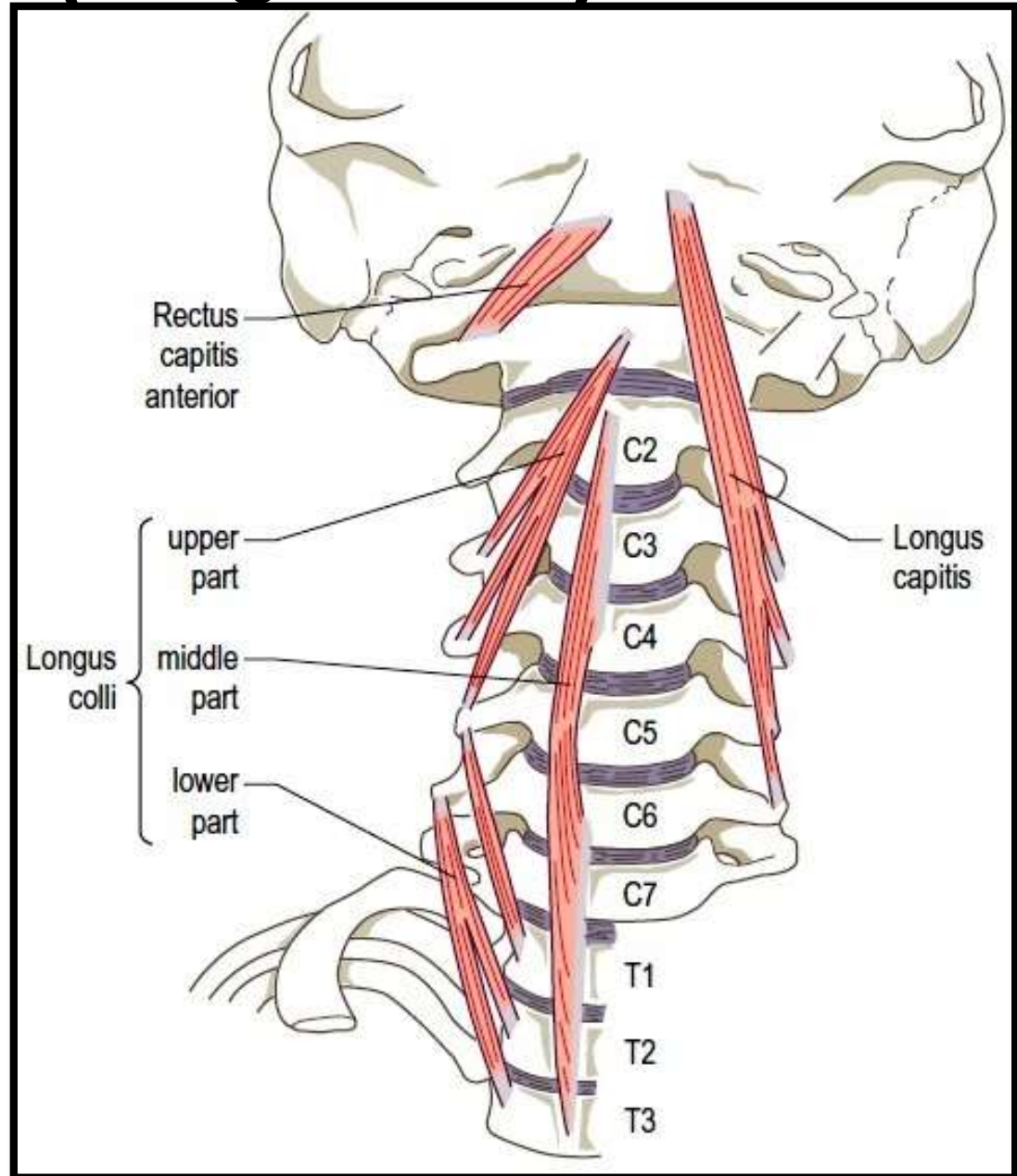
MIDDLE VERTICAL PART-

Origin-

- From front of bodies of **lower 3 cervical [C5, C6, and C7]** and **upper 3 thoracic** vertebrae.

Insertion-

- On front of bodies of **2nd, 3rd**, and **4th** cervical vertebrae.



Longus Cervicis (Longus Colli) contd...

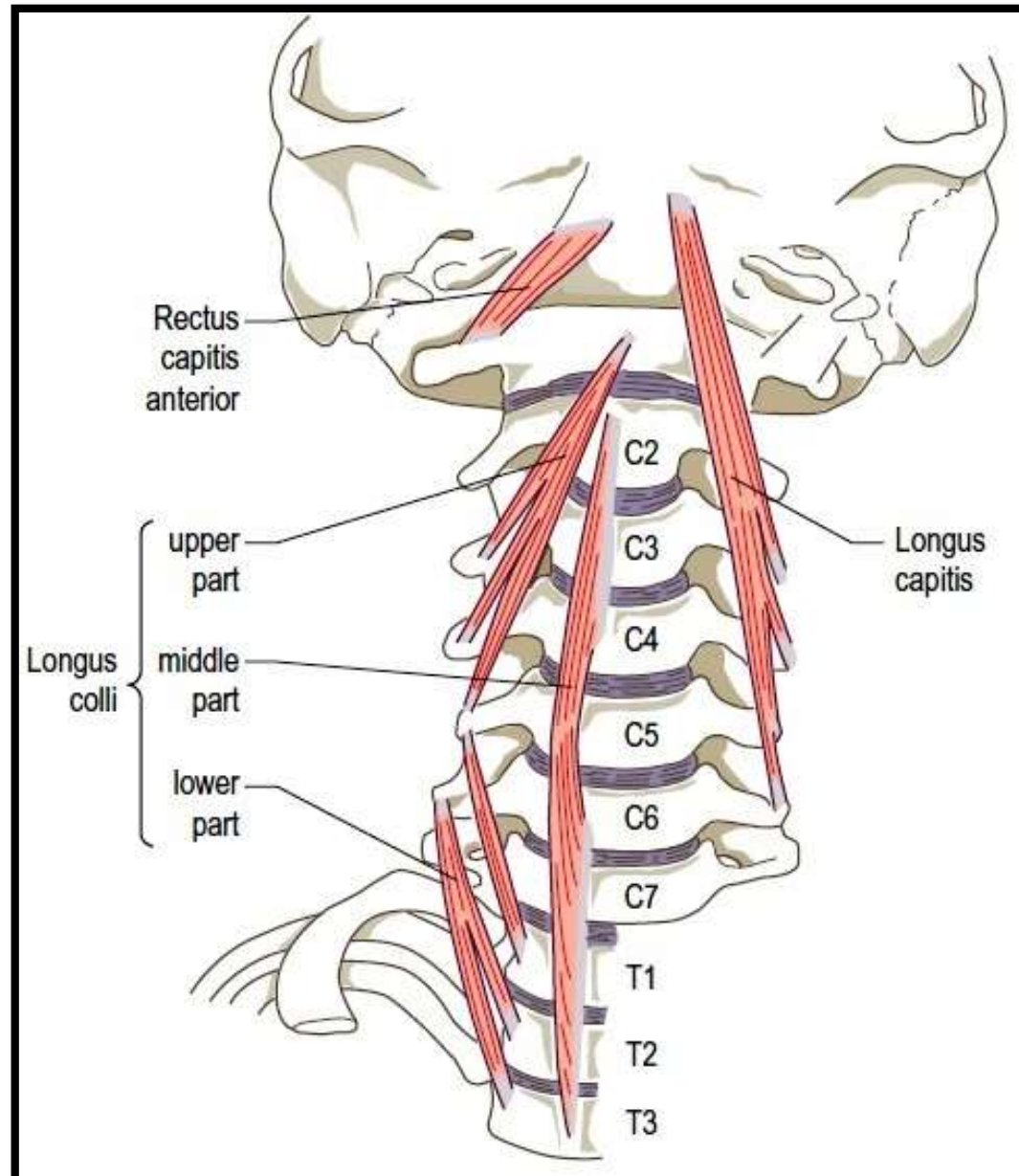
LOWER OBLIQUE PART-

Origin-

- Front of bodies of **upper 3 thoracic** vertebrae.

Insertion-

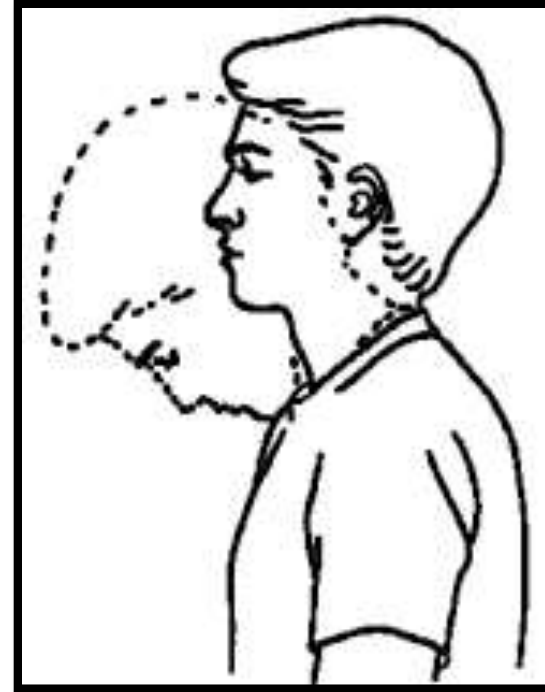
- Anterior tubercles of transverse processes of **5th** and **6th** cervical vertebrae.



Longus Cervicis (Longus Colli) contd...

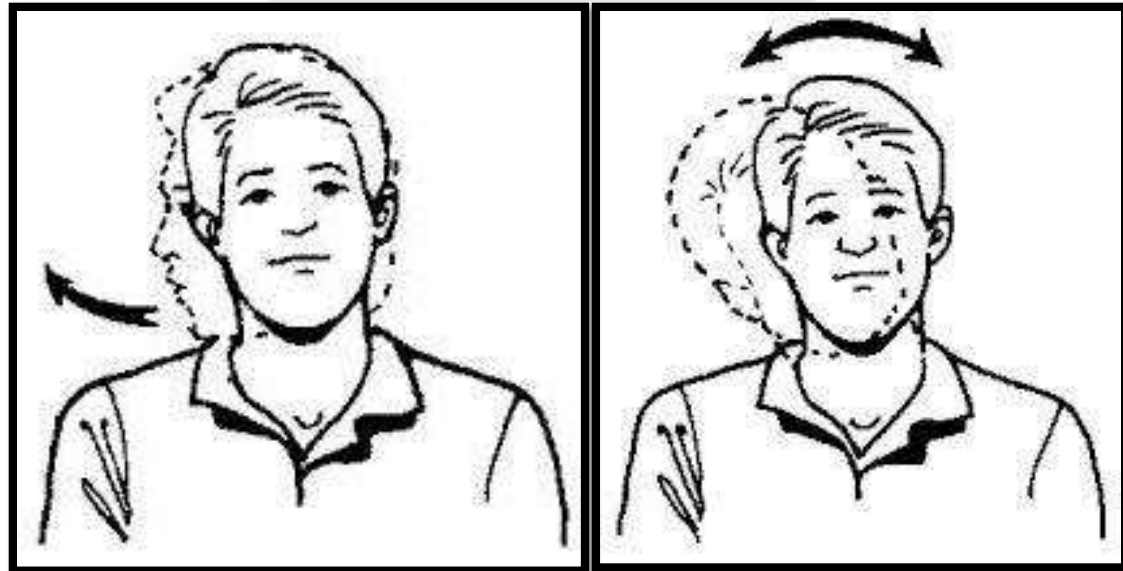
NERVE SUPPLY-

- Anterior primary rami of **C2-C6** spinal nerves.



ACTIONS-

- Flexion of neck.
- Lateral Flexion the neck (by **upper oblique** part).
- Rotation of neck to the opposite side (by **lower oblique** part).



Longus Capitis

ORIGIN-

- Anterior tubercles of the transverse processes of **C3, C4, C5,** and **C6** vertebrae.

INSERTION-

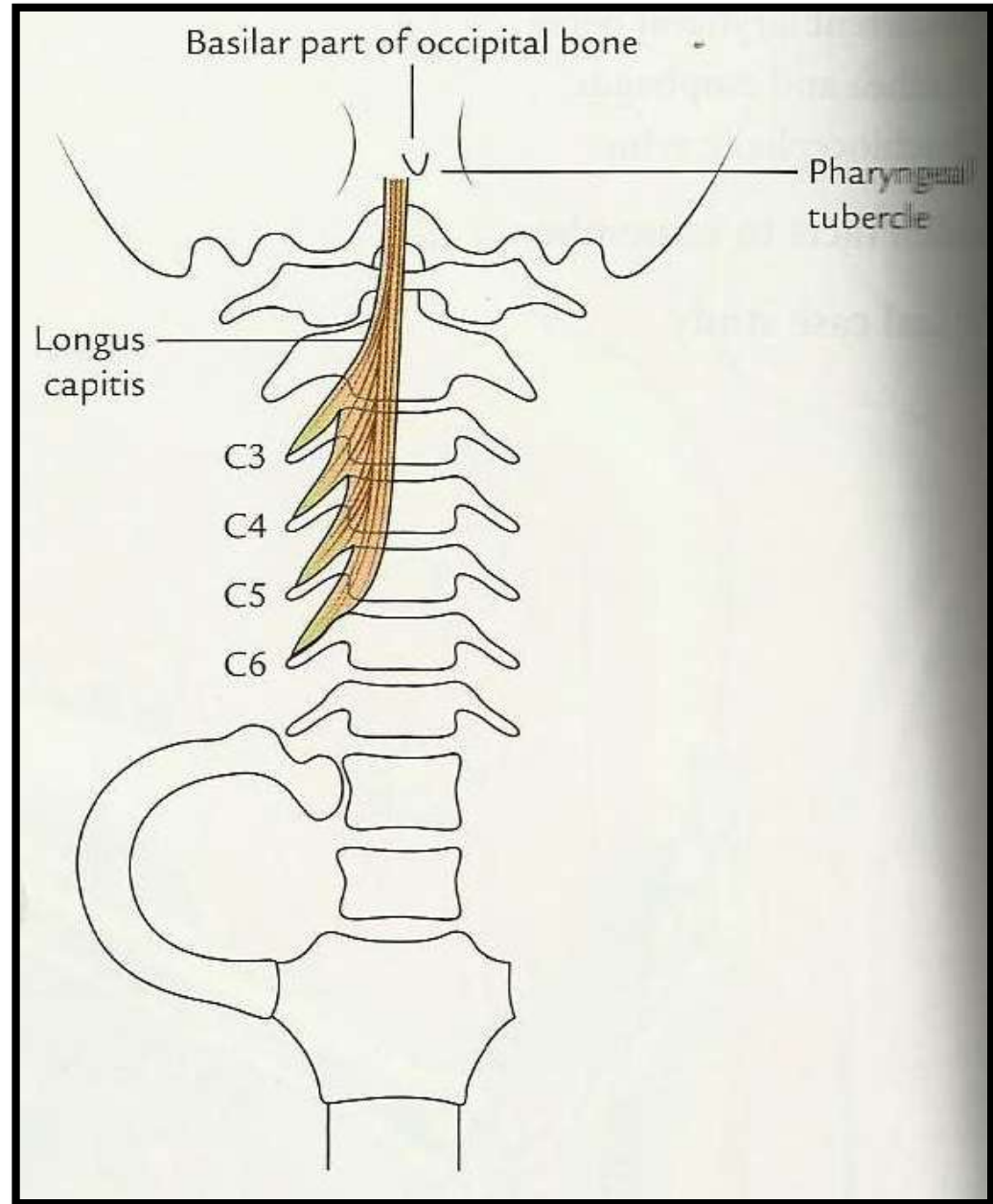
- Inferior surface of basilar part of occipital bone along the **side of pharyngeal tubercle.**

NERVE SUPPLY-

- Anterior primary rami of **C2-C6** spinal nerves.

ACTIONS-

- **Flexion** of head.



Thank
You!